

Plainville Public Schools

DISTRICT REOPENING PLANS

AUGUST 6, 2020

The Importance of In-Person Learning

A Balanced View of Risk

The decisions around the return to school must reflect a global view of risk. We must balance the risks of COVID-19 infection with in-school learning, with other significant risks to the overall health and well-being of our kids when they are out of school.

Loss of learning

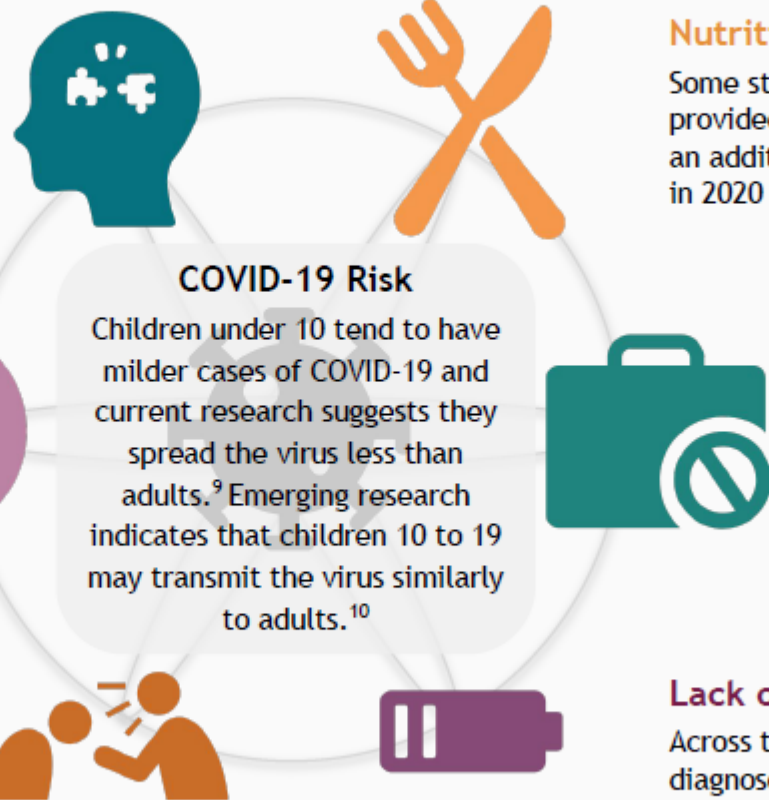
Students could return in the fall already behind due to lack of in-person education, with up to 30% less reading learning and up to 50% less math learning compared to gains during a typical school year.¹

Social & emotional impact

In a US survey, 29% of parents said their children's emotional and mental health were suffering due to social distancing and closures.² Additionally, 13% of adolescents in the US receive mental health care from their schools, with school being the only source of support for 35% of those children.³

Reduced detection of child abuse

Teachers serve as mandatory reporters of child abuse and neglect. Hospitals across the country saw increases in child abuse injuries and deaths that coincided with lockdown orders.⁴



Nutritional insecurity

Some students depend on free/reduced-price meals provided in schools. Estimates suggest there will be an additional 1.2 to 6.8 million food insecure children in 2020 than there were in 2018.⁵

Loss of parental employment

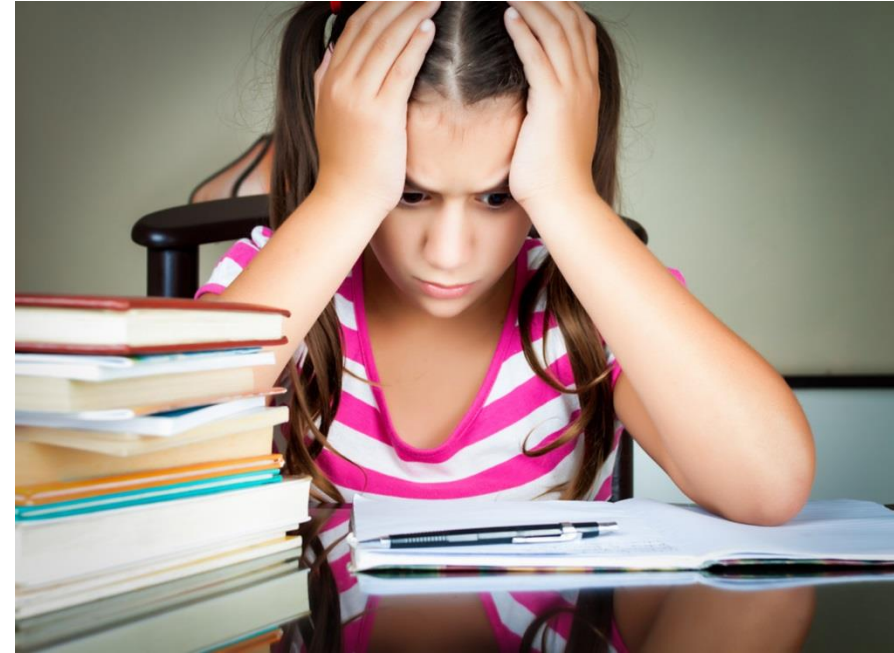
Parents may be unable to work if they can't find childcare options to replace school. Recent research suggests that if schools and daycares remain closed, 17.5 million workers, or 11% of the US workforce, may face major barriers to work.⁶

Lack of access to essential services

Across the US, about 1.5 million children have a diagnosed speech impairment⁷ and approximately 1 in 54 children have been diagnosed with autism spectrum disorders.⁸ These children, and others that require specialized supports, may have missed speech therapy and critical development services they previously received at school.

When Schools Are Closed

During the spring school closure, instances of anxiety, depression, substance abuse, social isolation and behavioral health needs among children grew dramatically. Many children experienced academic regression and loss of learning.



Should Schools Reopen?

Due to the negative impact of school closures on children, there is widespread support among the medical community for reopening schools and providing in person learning opportunities [American Academy of Pediatrics](#), [Harvard School of Public Health](#), [Massachusetts Department of Education](#), [Parabola Project](#)

- Infectious disease specialists suggest that it is appropriate to reopen schools with additional safety measures in place when community transmission rates are low
- While there has been a slight increase in cases in Massachusetts over the last two weeks, the current transmission rate is 2.2%

Doctors on Back to School in MA: <https://youtu.be/oHiEThCMROc>

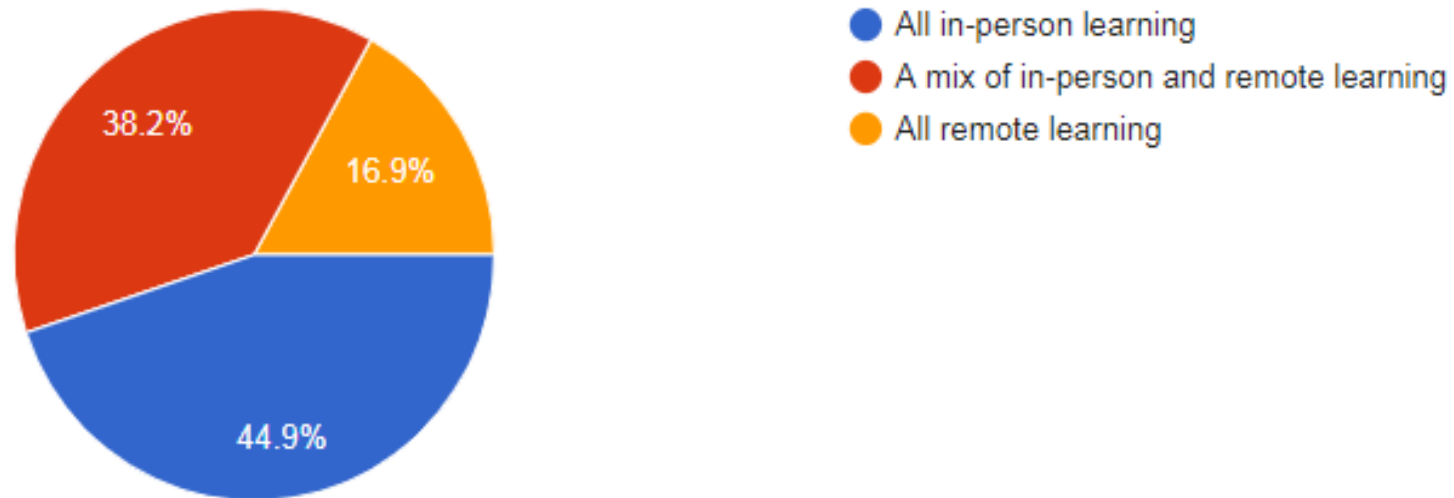
Benefits of Reopening Schools

- Students learn more effectively when they are physically present in the classroom
- Students with special educational needs and second language needs are better able to access the full range of programming and services they need in school
- Students have the opportunity to connect with staff members and peers at school, diminishing social isolation
- Many students rely on the schools for food, counseling and mental health support
- Assessing student learning and providing differentiated instruction to address learning gaps is more effective when teachers are able to interact directly with students

Family Perspectives on In-Person Learning

Assuming appropriate safety measures are in place, what is your preference for how your child returns to school in the fall?

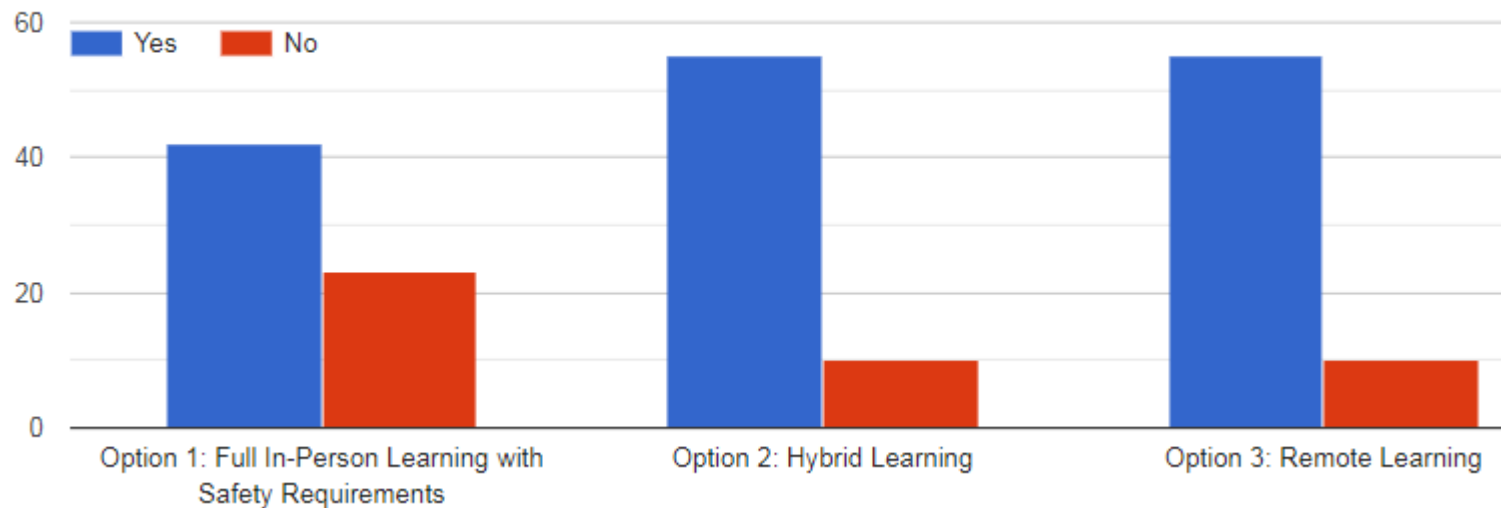
508 responses



Staff Perspectives on In-Person Learning

Given what you know at this time would you be willing to return to work under?

65 responses



Health and Safety Protocols

Staff and Student Screening

- All staff members will be required to complete a daily Covid screening prior to coming to work
- Parents/Guardians will be asked to screen students daily before sending them to school
- Substitutes will be required to check in with the school nurse upon arrival and will complete a Covid screening prior to reporting to the classroom
- Visitors to the building will not be allowed during the school day
- Technicians, contractors and repair workers will be screened for Covid before entering the building

In Person Learning Safety and Health Protocols



- Students and staff members required to wear masks in the school buildings and on buses
- Social distancing requirements enforced
- Protocols for increased hand-washing and cleaning established
- Day custodial staff increased to allow for more frequent cleaning of restrooms, common spaces, high touch surfaces, etc.
- Signs posted throughout the building marking traffic patterns in hallways, proper procedures for mask wearing and hand-washing
- Plexi-glass dividers installed in office spaces
- Isolation spaced in both buildings established near the nurse's office where students or staff members can be isolated if they become ill

Health and Safety Protocols - continued

- Protocols established for responding to a student or staff member testing positive for Covid
- Students divided into cohorts and interaction between cohorts limited
- Movement throughout the building limited—teachers travel to students
- Sharing of materials between students restricted
- Multiple entrances and exits utilized to limit number of students and staff in each area of the building
- Protocols put in place for managing minor health issues in the classroom—nurse's will triage students through phone screenings
- Mask breaks scheduled at regular intervals throughout the day

Health and Safety/PPE Supplies

PPE Supplies	
Eye Protection	Face Shields
Waste Disposal	Hand Sanitizer
Disposable Masks – Students	Disposable Masks – Teachers and Other Staff
KN95 Masks	N95 Masks
Disposable Gowns	Disposable Gloves-vinyl-4 sizes
Disposable Gloves-Nitrl-4 sizes	Sanitizing Wipes

Note:

- We are awaiting delivery of disposable gloves
- A three-month supply of all other items is in place

Responding to Positive Cases of Covid-19

- If a student or staff member becomes ill at school, they will be screened by the nurse
- Anyone presenting with symptoms of Covid-19 will be moved to an isolation space and will need to be dismissed from school immediately
- All areas the student/staff member have visited will be immediately cleaned and disinfected and will remain closed for a minimum of 12 hours
- The student/staff members will need to be tested for Covid-19 and follow DPH requirements for self-quarantining
- The school nurses will work with the public health nurse to complete contact tracing
- Students who are determined to be close contacts will be advised to get tested and will need to remain home while awaiting their test results
- Close contacts will need to be picked up from school and cannot ride the bus home
- Students who test negative and show no symptoms may return to school
- Any individual who chooses not to get tested must self-quarantine for 14 days

School Closures

- If we have a positive case of Covid-19 in the school, we will work with the public health nurse to determine if the building or a section of the building needs to be closed for deep cleaning
- If school closure is necessary, teachers and students will transition to remote learning
- If there is more than one case of Covid-19 in the school, or multiple cases within a short time period, Plainville Public Schools will work with the public health nurse to determine if schools need to be closed for a brief period (1-3) days for deep cleaning or for a possible 14-day quarantine period

Transportation

Safety Protocols:

- All students must wear masks while on the bus
- One student per seat/siblings can sit together
- Windows remain open when possible
- Assigned seats
- Routine cleaning and sanitization of vehicles



Food Services

Safety Protocols:

- Breakfast and lunch served daily to students in their assigned area of the building
- We are exploring the possibility of distributing meals to families on remote learning days
- Students will be allowed to remove masks since no students will be within 6 feet of each other

HVAC

Safety Protocols:

- Filters in all units were changed this summer and will be changed again over the December break and the April break
- All cooling and heating coils have also been cleaned
- All rooftop units received preventative maintenance this summer
- Windows will be opened for regular air flow during the day

Note: Air quality testing was completed in April 2019. We received a “clean” report which included recommendations to continue to clean classroom units and replace filters at least annually and continue to replace stained ceiling tiles when necessary.

District Plans for Three Reopening Scenarios

Full Return to In-Person Learning With Additional Safety Measures

- The district could only accommodate a full return to in-person learning if we implemented the minimum standard of 3 ft. of social distancing in classrooms
- The Massachusetts Department of Education reopening guidelines allows for districts to implement 3 ft. of distancing but encourages districts to strive for 6 ft.
- The CDC, The Harvard School of Public Health “Schools for Health” report and the Parabola Project Medical Team all advocate for districts to implement 6 ft. of distancing
- In order to meet social distancing requirements on buses the district would need to double transportation runs

Full Return to In-Person Learning – cont.

- In order to meet safety requirements when students are eating, lunch would be staggered over approximately 3-4 hours. Students would be divided between available spaces which would need to be sanitized between groups
- Snack and mask breaks would have to be held outside due to lack of space
- The district would need to add additional classrooms
- Special subject instruction would need to be held outside and may be limited due to space
- Accommodating mask breaks and movement breaks in inclement weather will be very challenging as outdoor spaced including potential tented areas, can only accommodate a limited number of students at any given time.

Hybrid Model for Learning

- In a hybrid model the district would implement 6 ft. of social distancing in all classrooms
- Students would split their learning time between in-person and remote learning
- All students would attend school in-person two days a week and learn remotely three days a week
- Wednesdays would be a remote learning day for all students and buildings would be thoroughly cleaned and sanitized between cohorts
- Teachers would host regular virtual class meetings
- Remote learning days would most likely involve a synchronous (live) class meeting and asynchronous (pre-recorded) lessons, assignments and projects
- Students receiving special education and EL services would receive their full range of services in-person and remotely (We are currently studying the feasibility of increasing these students in-person time)

Structure of Hybrid Learning in Plainville

- All K-6 students would be assigned to a cohort (A,B)
- Students would attend school according to the following schedule:

Monday	Tuesday	Wednesday	Thursday	Friday
Cohort A	Cohort A	Remote for All	Cohort B	Cohort B

Fully Remote Model for Learning

- All students will be provided with district-owned devices to support remote learning
- The district will implement google classroom, a universal platform, for grades 3-6. Preschool, kindergarten, grade 1 and grade 2 students and teachers will use SeeSaw for remote learning
- Remote instruction will be significantly more robust than it was during the emergency closure, with more direct teaching provided across all content areas (ELA, Math, Science and Social Studies)
- Students will be provided opportunities to work collaboratively on projects and assignments
- Students will receive feedback on their learning and will be assessed on their progress towards meeting grade-level standards

Fully Remote Model for Learning – cont.

- Social/Emotional learning and instruction will be integrated into the remote learning plan
- Students receiving special education and EL support will receive their full range of services
- Students who require additional support and re-teaching may receive developmental reading and/or math instruction remotely in small groups
- Time on learning requirements will be the same as they are during the regular school year with students engaged in learning for a minimum of five hours a day

Options for Parents

Parents/Guardians who are not comfortable having their child return to in-person learning have the following options:

- Parents can choose to homeschool their child. Parents choosing this option must submit a home-school application and supporting documentation to the district prior to the start of school
- Parents can choose to have their child participate in a remote learning program offered by the district. Parents will need to indicate their choice by **Friday, August 21, 2020**.

Superintendent's Recommendation

Hybrid Learning to Start the School Year

- First Day of School:
Thursday, September 17, 2020
(dependent upon approval of waiver)
- Re-evaluate district plans in 6-8 weeks



Timeline for Decisions

- Detailed reopening plans will be shared with the public on Thursday, August 13, 2020
- A survey will be sent to parents/guardians on Monday, August 17, 2020
- Parents will be asked to make a decision on whether or not they will access school transportation (decisions will be binding through the first eight weeks of school)
- Parents will be asked to confirm if their child will be returning to school or choosing a remote learning option or homeschooling
- Survey responses will be due by **Friday, August 21, 2020**

Questions?

- Contact:

David P. Raiche, Superintendent of Schools

draiche@plainville.k12.ma.us

508.699.1300

